



10 REFINED BEDROOMS ACCOMMODATING UP TO 20 PEOPLE



CASA DEL CAPITAN offers 10 restful and stylish bedrooms with individual climate control, each with spectacular sea views, Mediterranean style patios or large terraces. The bedroom's names are either related to the previous occupants Captain Moore and his wife Catherine, or a homage to Dali's passion for specific animals.

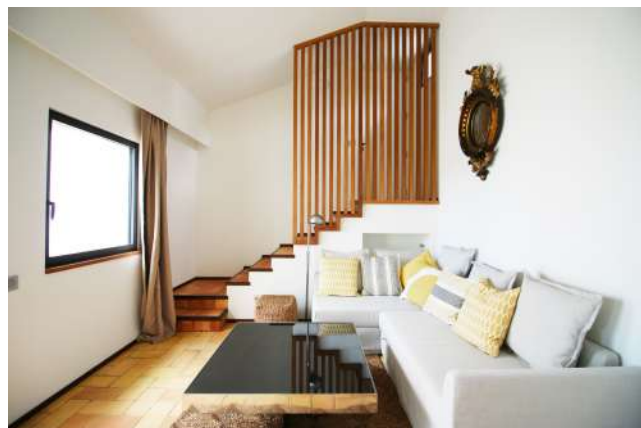
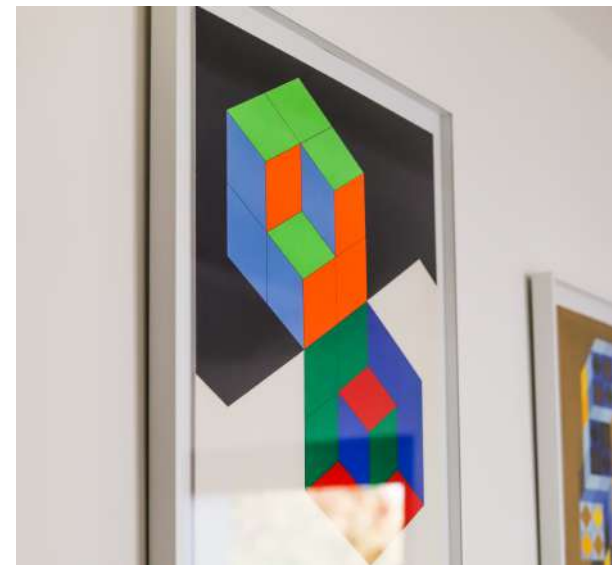
CAPITAN : master bedroom (king size bed, 1,80 m) with ensuite bathroom: double sinks, bath tube, shower and independent toilets, with large sliding windows onto private terrace & sea



CATHERINE : master bedroom (king size bed, 1,80 m) with ensuite bathroom: double sinks, bath tube, shower and independent toilets, with large sliding windows onto private terrace & sea



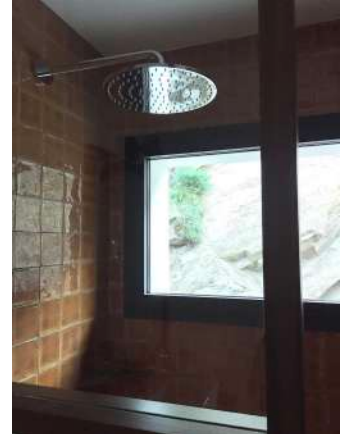
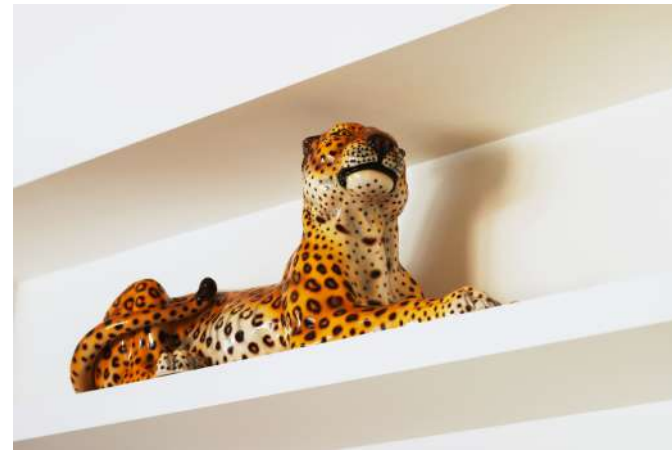
CAP DE CREUS: 1 family suite with 1 king size bed (1,60m) in the bedroom, and 1 convertible sofa (1,40m) in the sitting-room, with ensuite bathroom: shower, bath tube, toilets



HORMIGAS: 1 bedroom with 4 bunk beds (0.80 m) with ensuite bathroom (double sink, shower and independent toilets)



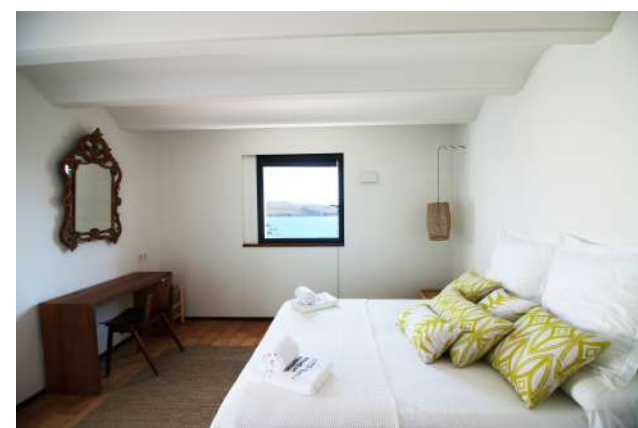
OCELOT: cozy 'office' convertible into bedroom (1,40m-2 persons) with ensuite bathroom (shower, independent toilets)



JIRAFA: 1 king size bed (1,60 m) & 1 single bed (0,80 m) with ensuite bathroom (shower, independent toilets).



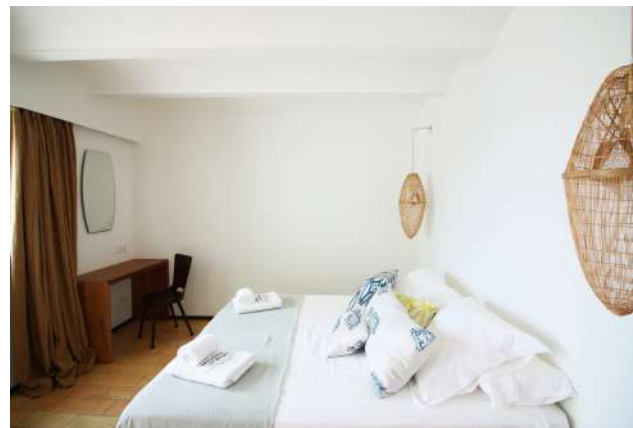
MARIPOSA:
2 twins beds (2x0,80 m)
with ensuite bathroom (shower
and independent toilets).



CABALLOS: 2 twins beds (2 x 0,80 m) with en-suite bathroom (shower and independent toilets)



ELEFANTE: 2 twins beds (2 x 0,80 m) with ensuite bathroom (shower and independent toilets)



SIRENA : 2 twins beds (2 x 0,80 m) with en-suite bathroom (shower and independent toilets)



PESCADOR : 2 twins beds (2 x 0,80 m) with ensuite bathroom (shower and independent toilets)



